

BIRMINGHAM

Domestic Abuse Prevention Strategy 2018-2023

Changing Attitudes Changing lives



Making a positive difference everyday to people's lives



Domestic Abuse Grant Funding Application Guidance

PROVISION OF SUPPORT FOR VICTIMS OF DOMESTIC ABUSE IN THE - COMMUNITY AND IN SAFE ACCOMMODATION

1. Introduction and summary

This grant call is from Birmingham City Council, Adult Social Care, and it seeks proposals from local grassroots organisations to provide tailored support provision for victims of domestic abuse and their children. We have set aside a total of approximately £500,000 for this grant call.

We welcome joint applications from organisations, as well as from individual organisations. Services that are successful in this grant application will then be collated into a community grants prospectus, which will be sent to relevant external organisations by Birmingham City Council.

2. Background and context

Domestic abuse touches the lives, directly or indirectly, of most people in Birmingham. The sheer scale of it causes untold harm to individuals, children and families, communities and damages the social fabric of the city. [Birmingham's Domestic Abuse Prevention Strategy 2018-2023](#) “**Changing Attitudes Changing Lives**”, sets out our partnership response to domestic abuse.

Our Domestic Abuse strategy sits alongside our Vulnerable Adults Housing and Wellbeing Support Services and our [Vision and Strategy for Adult Social Care in Birmingham](#) and the [Homelessness Prevention Strategy](#). These three strategies call for a Prevention First approach that embeds earlier interventions and personalised support to reduce the impact of costly crisis interventions which are based upon statutory thresholds or definitions. Prevention and Early Intervention is also one of Birmingham City Council's key priorities. The aim being through preventive responses, citizens are enabled to live healthy happy independent lives within their communities.

As well as supporting our strategic approach as outlined above, this grant call will also strengthen the existing support and wellbeing pathway, currently in place for victims of domestic abuse and their children, through our commissioned domestic abuse services. These include the domestic abuse hub, refuges, lead workers service and long-term dispersed accommodation. We would anticipate that organisations successful in this bid will feed into this pathway. More information about this pathway can be found in **Appendix 3**.

Part 4 of the Domestic Abuse Act 2021 places a new duty on local authorities to ensure the provision of support to victims and their children within safe accommodation. It places requirements on Birmingham City Council as a tier one authority, to appoint a local partnership board, prepare and publish strategies based on robust needs assessments and give effect to these strategies. A link to Birmingham's Needs Assessment can be found in **Appendix 4**.

The new duty on local authorities aims to ensure that all victims of domestic abuse have access to the right support within safe accommodation when they need it. In April 2022, Birmingham City Council was allocated £3.2m funding to discharge its new duty under Part 4 of the Domestic Abuse Act. ***The funding is for 12 months.***

2. What we are looking for

Under this grant call, a portion of funding has been set aside for local grassroots domestic abuse services to bid in for the following lots:

- **Lot 1 - Provision of support within safe accommodation.**
- **Lot 2 - Projects that meet other gaps identified in the need's assessment.**
- **Lot 3 - Projects that support domestic abuse prevention and early intervention.**

Project proposals are being sought for at least one of the three Lots. However, you can apply for more than one Lot but please specify in your application which Lot(s) you are applying for.

Lot 1: Provision of support within safe accommodation

In line with the Domestic Abuse Act and Department for Levelling Up, Housing and Community (DLUHC) statutory guidance, proposals will be considered from domestic abuse organisations that offer tailored support to victims of domestic abuse and their children **within safe accommodation**. Definitions and examples of support and safe accommodation in relation to the Duty can be found in **Appendix 1**.

We are particularly seeking applications that will provide support within safe accommodation as identified in the Needs Assessment. These include:

- 1a** - Children's support
- 1b** - Therapeutic support and counselling
- 1c** - Support for those with 'complex' needs (e.g. substance support needs)
- 1d** - Support for those with protected characteristics (e.g. the Chinese community, older people, or the Gypsy Roma Traveller community)
- 1e** - Wider specialist support around housing, benefits, legal options etc.
- 1f** - Specialist support for victims (e.g. support groups, wellbeing)
- 1g** - Specialist cost of living crisis support

The accommodation and the support must meet certain Quality Standards for both the support provided, and the accommodation itself. Organisations must be able to demonstrate how these standards are met, and how they will work towards any that are not yet met. This will be assessed in the proposal. More information about the quality standards can be found in **Appendix 2**.

Quality Standards for support include:

- [Department for Levelling Up, Housing and Community](#) (formerly MHCLG) Annex B;
- [Imkaan](#);
- [Women's Aid](#);
- [BVSC's Supported Exempt Accommodation](#);
- [Spring Housing's Charter of Rights](#);
- [Male Domestic Abuse Network Service Standards](#);

- [Domestic Abuse Housing Alliance](#)

Quality standards for safe accommodation include:

- [Department for Levelling Up, Housing, and Community – National Standard of Expectations](#);
- [Spring Housing's Charter of Rights](#);
- Our expectations include:
 - adequate security measures – must have CCTV outside property, fob entrances, rules for residents to adhere to about guests;
 - a worker to be on-call in case something happens out of hours;
 - address and number to be kept anonymous – paperwork about resident must use PO Box, a designated pick up/drop off for taxis not at the address;
 - clear Covid guidelines and protocol in place

Please note:

- These quality standards are only to be met if your proposal fits into Lot 1.
- The number of quality standards to meet seems daunting, but there is a lot of duplication between them which can be seen in **Appendix 2**.
- If you are working towards the standards you will need to provide full details of how you propose to meet the standard, with dates and responsible officers within your organisation. Progress of your bid will rely on this. If you are successful, continued progress on meeting the standards will be assessed by the Council in our quarterly meetings.

How much can I apply for in Lot 1?

Grants of up to approximately £50,000 (subject to strategic exemptions) are available to meet service needs, dependant on the scale of actions to be delivered. Awards will receive 80% of payment upon approval and 20% at the end of the project.

Below is a table outlining the basic criteria that needs to be met for Lot 1 proposals, to be eligible for this grant funding.

Minimum criteria for Lot 1 only – provision of support within safe accommodation only

We would want you to be able to meet all of the steps or demonstrate how you will aim to meet them in your application. If successful, progress towards these standards will be assessed quarterly. A full summary of what support and safe accommodation includes is in **Appendix 1**.

Step 1	Step 2	Step 3
Do you provide support to victims and their children within safe accommodation as defined by DLUHC?	Do you meet, or are you working towards, the following quality standards for support: <ul style="list-style-type: none"> - DLUHC - Imkaan - Women's Aid - BVSC's Support in Exempt Accommodation; - Male Domestic Abuse Network Service Standards; - DAHA Accreditation Framework for Housing Providers 	Do you meet the following quality standards for safe accommodation: <ul style="list-style-type: none"> - DLUHC National Standards of Expectations for supported housing - Spring Housing's Charter of Rights
If yes: Please continue to Step 2 and be clear about how you provide this support in your application.	If yes: Please continue to step 3 and evidence how you meet or intend to meet these standards in your application.	If yes: You are eligible to apply for this grant – please evidence how you meet these standards in your application.
If no: Please review your proposed bid as necessary.	If no: Review your proposed bid and consider whether this grant is the right fit for your organisation. These standards are important for quality assurance. If you are willing to work towards them for the grant, potentially with some support from Birmingham City Council, please evidence this in your application.	If no: Review your proposed bid and consider whether this grant is the right fit for your organisation. These standards are important for quality assurance. If you are willing to work towards them for the grant, please evidence this in your application.
If you answered Yes to all three steps, you are eligible to apply. If you answered Yes to two steps, please be clear in evidence how you would plan to meet the criteria you do not yet meet. If you answered No to all the steps, it is unlikely you will be eligible for this Lot – consider if you are better suited to one of the other Lots.		

Lot 2: Projects that meet other gaps, including those identified in the needs assessment

In line with the new duty placed on us by Part 4 of the Domestic Abuse Act 2021, Birmingham City Council commissioned Birmingham Voluntary Service Council (BVSC) to complete a comprehensive Needs Assessment. Lot 2 will address the support gaps found in the wider Needs Assessment, that **does not need to be within safe accommodation**.

We are seeking applications from organisations that provide related support that addresses the following gaps as identified in the BVSC Needs Assessment completed January 2022 (please find a summary of the Needs Assessment, and a link to the full document, in **Appendix 4**):

- 2a** - Support for victims with disabilities (e.g. learning, autism or ADHD)
- 2b** - Support for children
- 2c** - Specialist support for victims (e.g. support groups, wellbeing)
- 2d** - Support for those with protected characteristics (e.g. the Chinese community, older people or the Gypsy Roma Traveller communities)
- 2e** - Support for those with 'complex' needs (e.g. substance support needs)
- 2f** - Wider specialist support (e.g. housing, benefits, legal options etc).
- 2g** - Specialist cost of living crisis support

We will send out a link to the full needs assessment once it has been published.

How much can I apply for in Lot 2?

Grants of up to approximately £30,000 (subject to strategic exemptions) are available to meet service needs, dependant on the scale of actions to be delivered. Awards will receive 80% of payment upon approval and 20% at the end of the project.

Lot 3: Projects that support prevention and early intervention

We will also consider applications that provide programmes around prevention and early intervention.

These could include:

- Groupwork with targeted victims raising awareness about domestic abuse
- Work in schools and with young people about healthy relationships
- Targeted community engagement for those with protected characteristics

How much can I apply for in Lot 3?

Grants of up to approximately £20,000 (subject to strategic exemptions) are available to meet service needs, dependant on the scale of actions to be delivered. Awards will receive 80% of payment upon approval and 20% at the end of the project.

Please note whilst Lots 2 and 3 do not need to meet the same Quality Standards as Lot 1, we do expect to see your organisation's quality assurance processes in your application.

For all three Lots, we are particularly interested in organisations that provide specialist support to victims with protected characteristics under the Equality Act 2010. This includes (but is not exhaustive):

- Black and Minoritised
- Gypsy Roma and Traveller
- Lesbian, gay, and bisexual
- Transgender and non-binary
- Disabilities and learning needs

Please email applications and queries for all Lots to: DACGrants@birmingham.gov.uk

We will acknowledge your submission within 3 working days. If you haven't heard from us in that time, please get in touch in case your email hasn't been received.

We will be holding an online forum to answer questions you may have about this grant call on 6th December 2022.

3. Summary of Lots and eligibility

	Restriction	Reason(s) for these restrictions
All Lots	Restricted to local grassroots community organisations	We recognise that applications to full procurement processes can be a lot of work for smaller organisations, so wanted to offer this opportunity. We recognise grassroots community organisations often do valuable work with communities, and need some support
	Must have been in operation for at least one year	We aim to ensure that all organisations are established, and are able to report on at least one year of activity and accounts so that they can prove outcomes and quality assurance
	Must be based in Birmingham	The organisation must work in Birmingham, however we will support organisations that offer cross-border support
Lot 1	Provides support in safe accommodation	The aim of this Lot is to enhance support within safe accommodation, therefore this must be the main aim of the project
	Grants are up to approximately £50,000	For this Lot, to recognise the additional standards that must be met, the grant can be up to approximately £50,000.
	Quality standards must be met or worked towards for accommodation and support	DLUHC's statutory guidance requires that services commissioned to provide support within safe accommodation must meet, or be working towards, the quality standards outlined above
Lot 2	Fills gap in the city, including those identified in needs assessment	The aim of this is to meet gaps identified in the needs assessment that are not necessarily providing support within safe accommodation
	Maximum value of grant up to approximately £30,000	For this Lot the grant can be up to approximately £30,000
Lot 3	Fulfils a prevention or early intervention need	The aim of this is to provide support that provides early intervention or prevention, which is not necessarily outlined in the needs assessment
	Maximum value of grant up to approximately £20,000	For this Lot the grant can be up to approximately £20,000

4. Strategic fit

As a council we want to ensure there is sufficient support provision across the city, and that all needs are met geographically. Therefore, please make clear in the application form which ward/constituency(s) you propose to provide support in. We would be happy to discuss this further with you.

Please note if you are unsuccessful, it may be due to the application not meeting the needs where there are gaps geographically.

5. Dates and timeline

The deadline to bid for the grant is 5pm 23rd December 2022

These will then be assessed by a panel, and you will get a response by the **15th February 2023**

6. Restrictions and exclusions

Consistent with all grants awarded by the Council, there are some activities which cannot be considered:

- Staff costs of those not associated with this project;
- Costs incurred to form grant proposals;
- Core organisational costs - utility bills, rent, management costs etc. which are not directly related to the project activity;
- Contingency costs e.g. funds to provide a source of income or for fundraising activities;
- Political or religious activities;
- Projects outside of Birmingham;
- VAT that you can recover;
- Loans or interest payments;
- Purchase of alcohol or illegal substances;
- Capital costs of the building, bills etc.

In addition, proposals will not be considered where:

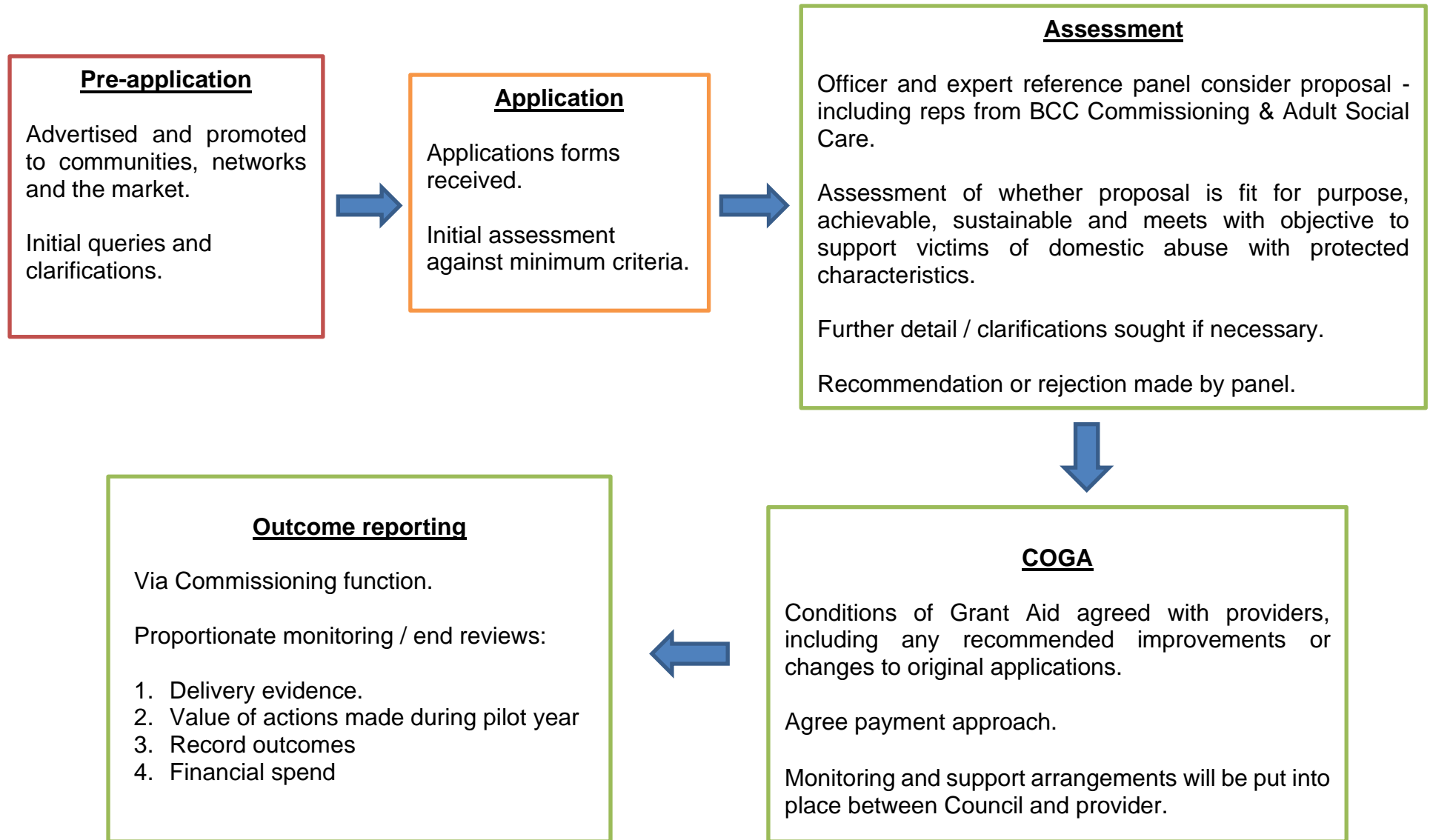
- They are incomplete and therefore prevent evaluation / assessment;
- They do not display clear delivery plans with impact / outcome explanations

Generic bed and breakfast accommodation and homeless hostels are not eligible for this grant, because they are not solely supporting victims of domestic abuse.

Managed temporary accommodation which is not separate or self-contained and with shared toilet, bathroom, or kitchen facilities must be single gender, or are not eligible.

Accommodation covered under other acts, such as temporary accommodation, are not eligible.

7. Application, assessment and grant award process flowchart



8. Outcome reporting

Community organisations that receive grants will be required to report on their outcomes to provide support to domestic abuse victims and their children. To capture this information Adult Social Care Commissioning will, in summary, oversee the following monitoring compliance:

Monitoring Conditions	
Frequency	Requirement
Monthly	Take part in a light touch, informal project monitoring catch ups (e-mail/telephone/face-to-face).
As required	Participate in the activity review as specified below
Quarterly	Produce a light touch formal report to detail progress and quantitative data against delivery of performance targets and activity outcomes.
Mid-point and then the end	Produce a light touch income and expenditure analysis for the project.
End of project evaluation	Complete customer monitoring form / case studies.
As required	Provide other relevant information as requested and take part in other relevant meetings such as forums, networks, BVSC meetings, Boards, Safeguarding meetings, and Provider meetings.
Full conditions will be agreed through a Conditions of Grant Aid (COGA)	

Failure to engage with the outcome monitoring approach may result in the Council taking steps to end the grant.

Conversely, where grant recipients are over-achieving in terms of the scope, conditions of the grant and where there is additional need identified the Council may consider increasing its financial investment.

Depending on funding received there may be additional reporting requirements.

9. Hints, tips and useful information to consider

- Be clear about how your proposal meets this Domestic Abuse grant call. This is fundamental to whether your proposal is successful.
- Ensure you read and follow the application guidance, particularly around what constitutes safe accommodation, and who we are aiming to support.
- Be honest and sincere about what your proposal will do and what it can achieve, as well as any risks or limitations to what you propose. The assessment process will identify how realistic and credible proposals are, as well as what types of support can be provided in addition to a grant award.
- Only reference outcomes you are confident you can achieve and evidence, rather than speculate about what might be possible.

Please email applications and queries to: DACGrants@birmingham.gov.uk